

# GCA Annual Conference

February 21-22, 2020

Georgia Highlands College

Cartersville, GA

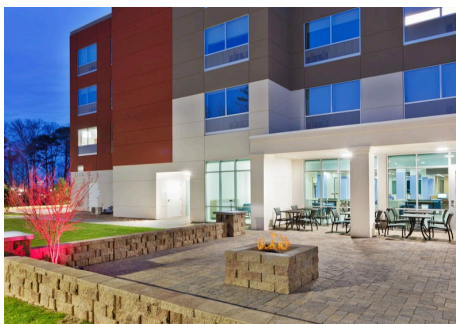
## CONFERENCE HOTEL SITES



### Home 2 Suites - \$119

1320 E Main St, Cartersville, GA 30120 • (678) 792-3346

Off I-75, this casual hotel is 2 miles from the 19th-century Old Bartow County Courthouse, and 6 miles from hiking at Pine Mountain. Relaxed studios and 1-bedroom suites provide free Wi-Fi and flat-screen TVs, as well as kitchens, dining areas, and living areas with pull-out sofas. A breakfast buffet is complimentary. Other amenities include an indoor saltwater pool, an exercise room and a 24-hour pantry, plus a furnished patio with BBQs. Pets are welcome for a fee.



### Holiday Inn Express - \$104

5628 GA-20, Cartersville, GA 30121 • (770) 606-0309

Off Interstate 75, this relaxed hotel in a modern building is 4 miles from Pine Mountain and 5 miles from the Booth Western Art Museum. The streamlined, casual rooms feature free high-speed Wi-Fi and flat-screen TVs, plus microwaves, minibridges, and tea and coffeemakers. Suites add separate living areas with sofas. Kids stay at no extra cost when accompanied by an adult. A breakfast buffet and parking are complimentary. Other amenities include a heated indoor pool and a gym.



### Hampton Inn - \$119

5600 Hwy 20 SE, Cartersville, GA 30121 • (770) 382-8999

Off I-75, this modern hotel is 3.7 miles from Cartersville Country Club and 4.9 miles from the Tellus Science Museum. The straightforward rooms include free Wi-Fi with in-room computers, and custom-designed beds, plus lap desks (for working on the bed) and pull-out sofas. They also have flat-screen TVs with HD channels, minibridges, microwaves and coffeemakers. Parking, hot breakfast and weekday breakfast bags to go are complimentary. Other amenities include a fitness center and an outdoor pool, plus 400 sq ft of meeting space and a business center.

# THURSDAY BOARD DINNER

## Table 20

20 N Wall St, Cartersville, GA 30120  
(470) 315-4851 • [www.table-20.com](http://www.table-20.com)

Warm, relaxed eatery offering American fare such as meat, poultry & seafood plus a full bar.



- P = Parking
- VP = Visitor Parking
- HP = Handicapped Parking  
(in front of Building A and behind Building C)
- LP = Ten Minute Limited Parking
- D = For Deliveries Only
- X = Fire Lanes  
(please don't go into or block)



The conference sessions will be held in Academic Building A.

Registration will be on the first floor lobby area. Follow the signage upon campus entrance for parking.

For those attending the Regents Advisory meeting, it will be held in the Student Center Ballrooms, Thursday, February 20th.

# CAMPUS MAP

